

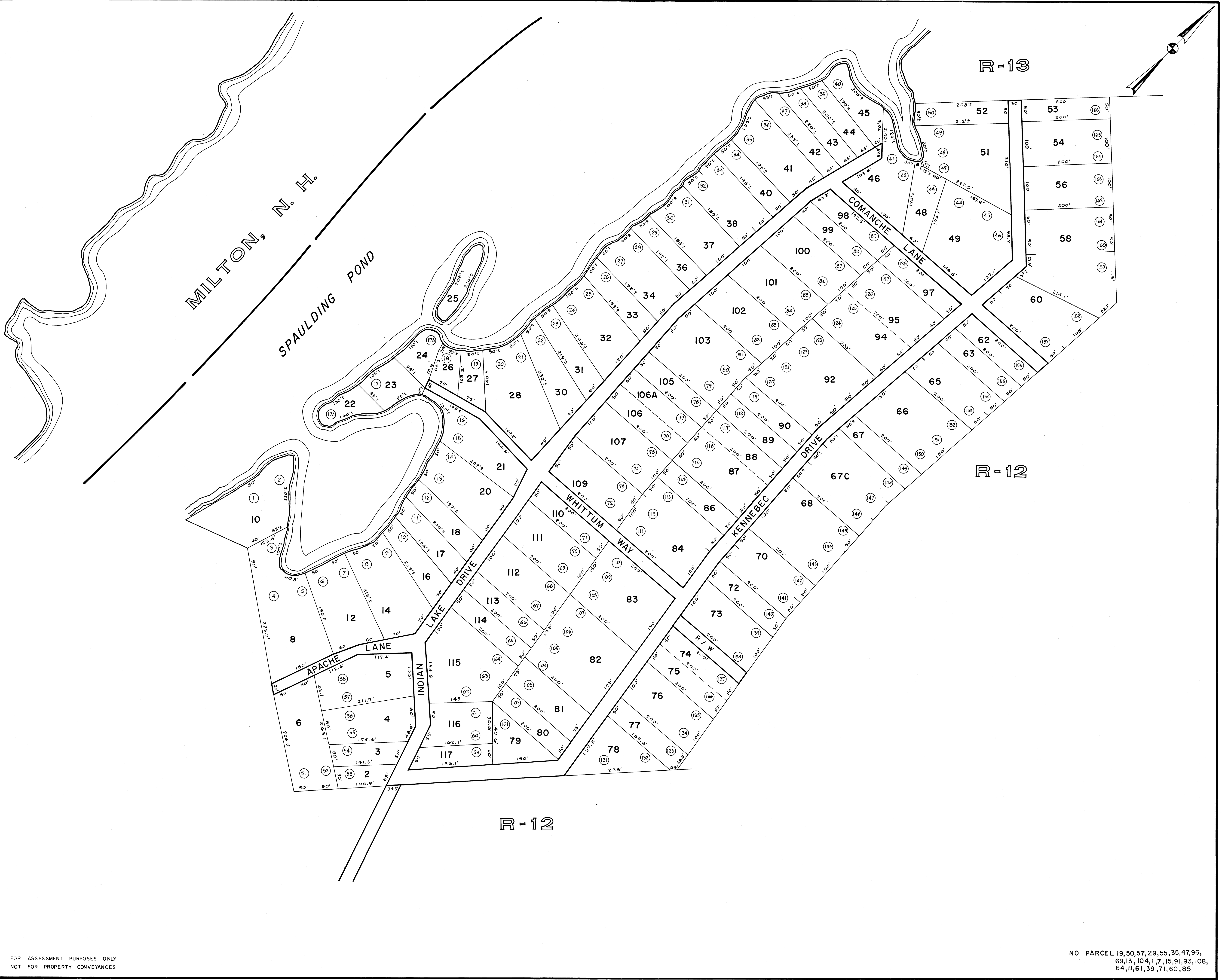
MILTON, N. H.

SPAULDING POND

R-13

R-12

R-12

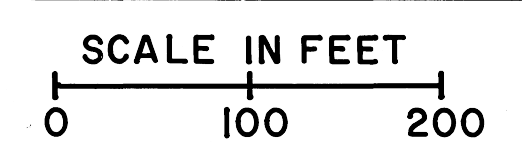


FOR ASSESSMENT PURPOSES ONLY  
NOT FOR PROPERTY CONVEYANCES

NO PARCEL 19,50,57,29,55,35,47,96,  
69,13,104,1,7,15,91,93,108,  
64,11,61,39,71,60,85

JOHN E. O'DONNELL & ASSOCIATES  
AUBURN, MAINE  
1973

PROPERTY MAP  
**LEBANON, MAINE**



**U-10**